

Citadel

100% Polypropylen FR
320 g/lfm



CI01
schwarz



CI02
blau



CI11
anthrazit



CI13
rost

Nora

100% Polyester
300 g/lfm



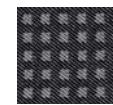
NO01
schwarz



NO02
blau



NO03
rot



NO11
schwarz/grau



NO12
blau/schwarz



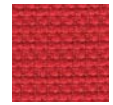
NO13
rot/violett

Manhattan

100% Polyester
400 g/lfm



MH01
graphit-
schwarz



MH03
feuerrot



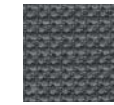
MH04
gelbgrün



MH07
beige



MH12
enzianblau



MH41
eisengrau

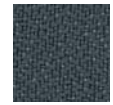
1

Lucia

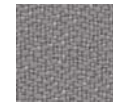
100% Polyester
400 g/lfm



5800
schwarz



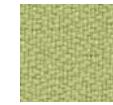
5801
dunkelgrau



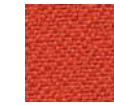
5802
hellgrau



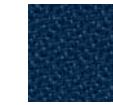
5807
rot



5809
apfelgrün



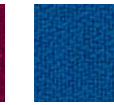
5816
orange



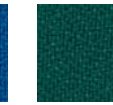
6015
dunkelblau



6040
bordeaux



6062
mittelblau



6068
dunkelgrün

King

100% Trevira CS
360 g/lfm



KI01
schwarz



KI02
blau



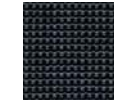
KI03
rot



KI04
grün



KI05
beige



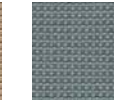
KI11
anthrazit



KI12
dunkelblau



KI15
beige meliert



KI21
grau

Royal

100% Polyester
450 g/lfm



RO01
tiefschwarz



RO02
pastellblau



RO03
korallenrot



RO04
farngrün



RO22
violettblau



RO41
telegrau

2

Genius

50% Polyamid
33% Schurwolle
10% Visil
7% Viskose
610 g/lfm



GE01
schwarz



GE02
blau



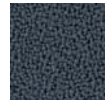
GE04
grün



GE11
anthrazit

Aquarius

100% Schurwolle
520 g/lfm



4101
grau



4102
schwarz



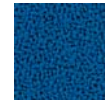
4108
hellrot



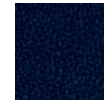
4109
rot



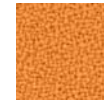
4112
weinrot



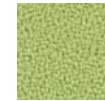
4115
hellblau



4116
dunkelblau



4170
gelborange



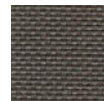
4171
apfelgrün

Kvadrat Field

100% Trevira CS
430 g/lfm



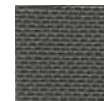
FI02 (782)
blau



FI15 (252)
graubraun



FI25 (232)
beige



FI31 (172)
dunkelgrau



FI41 (182)
schwarzgrau



FI51 (192)
schwarz

Kvadrat Cava

90% Schurwolle
Kammgarn
10% Nylon
460 g/lfm



CA01 (192)
schwarz



CA02 (782)
dunkelblau



CA16 (212)
beige



CA23 (642)
rot



CA52 (732)
hellblau



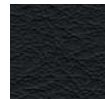
CA61 (153)
grau



CA74 (932)
mintgrün

Magic

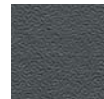
Kunstleder
100% Polyurethan
350 g/lfm



MG01
schwarz



MG02
blau



MG11
grau

3

in Klammern: Kvadrat-Nummern

Kvadrat Polo

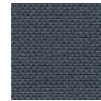
90% Schurwolle
10% Nylon
450 g/lfm



PO01 (191)
schwarz



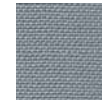
PO02 (781)
royalblau



PO11 (161)
graphit



PO23 (661)
bordeaux



PO31 (131)
steingrau



PO62 (751)
dunkelblau

Kvadrat Tempo

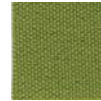
100% Trevira CS
470 g/lfm



TM01 (190)
tiefschwarz



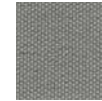
TM02 (770)
saphirblau



TM14 (930)
maigrün



TM23 (650)
rubinrot



TM31 (130)
mausgrau



TM51 (730)
blaugrau

Kvadrat Remix

90% Schurwolle
10% Nylon
415 g/lfm



RE02 (873)
blau-schwarz



RE05 (233)
hellbraun



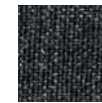
RE12 (773)
dunkelblau



RE13 (643)
hellrot



RE42 (733)
blau-grau



RE61 (173)
anthrazit

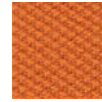
4

Kvadrat Steelcut*

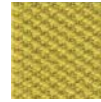
90% Schurwolle
10% Nylon
825 g/lfm



SC01 (190)
schwarz



SC03 (535)
orange



SC06 (435)
gelb



SC12 (775)
dunkelblau



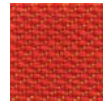
SC22 (835)
hellblau



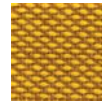
SC81 (180)
schwarzgrau

Kvadrat Steelcut Trio 2*

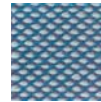
90% Schurwolle
10% Nylon
770 g/lfm



ST03 (533)
rotorange
meliert



ST06 (453)
signalgelb
meliert



ST17 (733)
weiß/türkis
meliert



ST41 (395)
mahagoni-
braun meliert



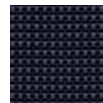
ST81 (153)
schwarzgrau
meliert



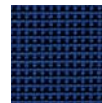
ST87 (213)
seidengrau
meliert

Kvadrat Pro

100% Trevira CS
510 g/lfm



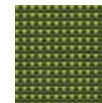
PR01 (191)
schwarz



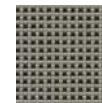
PR02 (771)
blau



PR03 (631)
rot



PR04 (953)
grün



PR05 (231)
beige



PR11 (181)
anthrazit

Kvadrat Divina Melange

100% Schurwolle
820 g/lfm



DM01 (180)
schwarz



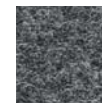
DM02 (731)
eisblau



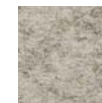
DM04 (931)
apfelgrün



DM06 (421)
gelb



DM11 (170)
dunkelgrau



DM17 (220)
beige

in Klammern: Kvadrat-Nummern

* Stoff-Nummern in elektronischen / OFML Daten für
Steelcut: CS..
Steelcut Trio2: TS..

5

Rind-Nappa-Leder



781
schwarz



782
dunkelblau



786
grau

6

Semi-Anilinleder*



SA01
schwarz



SA03
rotorange



SA04
olive



SA05
nussbraun



SA17
perlweiß

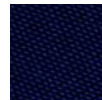
7

Duotec ESD

89% Polyacryl
2% Lycra
535 g/lfm



9801
schwarz



9802
blau



9803
rot



9811
grau

* Stoff-Nummern in elektronischen / OFML Daten für
Semi-Anilinleder: AS..

Hinweis: Weitere Farben auf Anfrage möglich.

NETZE/INTEGRALSCHAUM/GESTELL- UND BESCHICHTUNGSFARBEN KUNSTSTOFF-FARBEN

Netze gestrickt

Xantos



uni, schwarz

Hero



schwarz
8010



anthrazit
8000



orange
8020

Goal Air



schwarz
8001

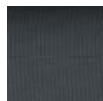


anthrazit
8004



orange
8003

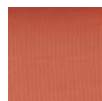
Campos, Geos



schwarz
8140



anthrazit
8004



orange
8003

Pios



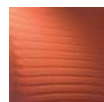
uni, schwarz
8011



schwarz
mit Quer-
streifen
8001



anthrazit
mit Quer-
streifen
8004



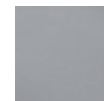
orange
mit Quer-
streifen
8003

Integralschaum

KINETIC^{SS}



schwarz
2000



grau
2002

Gestell- und Beschichtungsfarben



schwarz
..217



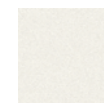
brillantsilber
..234



chrom
..324



poliert
..304



weiß
..283



gestrahlt
..348

Membran

AirPad



schwarz
8840



weiß
8844

Webware

MOVY^{IS3}, EVERY^{IS1}, BUDDY^{IS3}



uni, schwarz
8140



uni, weiß
8144

TANGRAM^{IS5}, Paravent

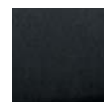


Avanti
Semi-
transparent
AV07

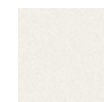


Pascal
Akustikgewebe
PA07

Kunststoff-Farben



schwarz
3217



weiß
3283



grau-blau
3246

Polsterdesign

VINTAGE^{IS5}

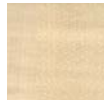


OBERFLÄCHEN/FARBEN/ TISCHKANTEN

Echtholz Furnier



Buche
430 / 450



Ahorn
431 / 451



Europäischer
Kirschbaum
433 / 453

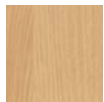


Amerikanischer
Nussbaum
435 / 455



Eiche
434 / 459

Dekore DBS / HPL



Buche natur
41F / 42F
(H1518ST15)



Ahorn Honig
41E / 42E
(H1521ST15)



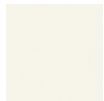
Kirsche hell
41H / 42H
(H3662ST9)



Nussbaum hell
41I / 42I
(H3775ST9)



Eiche hell
41G / 42G
(H1334ST9)



premium-
weiß
41A / 42A
(W1000ST2)



weißgrau
41B / 42B
(U775ST15)



staubgrau
41C / 42C
(U732ST15)



schwarz
41D / 42D
(U99ST2)

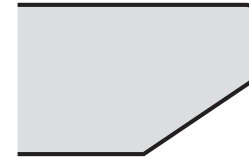
in Klammern: Egger-Nummern

Die abgebildeten Holzarten für Tischoberflächen geben annähernd den Farbton und die Struktur der Serie wieder. Holz ist ein Naturprodukt. Für Serientische kommen immer wieder neue Furnierstämmen mit verschiedener Struktur und Farbe zur Verwendung. Reklamation aufgrund materialbedingter Farb- und Strukturabweichungen können somit nicht anerkannt werden.

Die Zuordnung, welche Modelle es in welchen Ausführungen bzw. Farben gibt, entnehmen Sie bitte den Tabellenteilen im vorderen Bereich der Preisliste bei den einzelnen Produktfamilien. Hier sind auch die jeweiligen Bestell-Nr. zugeordnet.

Tischkanten

Fascino-2



NESTY⁵³



Kante gerade, ABS (2mm)
Farbe wie Dekor



Kante, ABS mit Gummistoßkante
(R50)



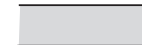
Kante ABS
Tische Bootsform
Farbe bei Dekor Holzart:
MDF, klar lackiert,
Farbe bei Dekor einfarbig:
Farbgleich lackiert.

KINETIC⁵⁵



Kante ABS

TANGRAM⁵⁶



Kante gerade, schwarz